

# J.R. Alford Greenway Trail Map

This Greenway is a Trust for Public Land project. The property was acquired by the State of Florida Department of Environmental Protection, Office of Greenways & Trails in 2001. The property is managed and maintained by Leon County, with the assistance of the Friends of the J. R. Alford Greenway.

The J. R. Alford Greenway encompasses 874 acres of open pasture and forested woodlands. The 17.5 miles of trails throughout the greenway are open to the public for non-motorized use from sunrise until sunset.



**Tallahassee-Leon County**  
**Leon County Public Works**  
**Division of Parks & Recreation**  
2280 Miccosukee Road  
Tallahassee, Florida 32308  
(850) 606-1470

FILE: \\edw\in\data\johnson\greenway\alford\dm\trailmap\_alford\_trailmap\_letter\_01-17-2008.mxd

## Legend

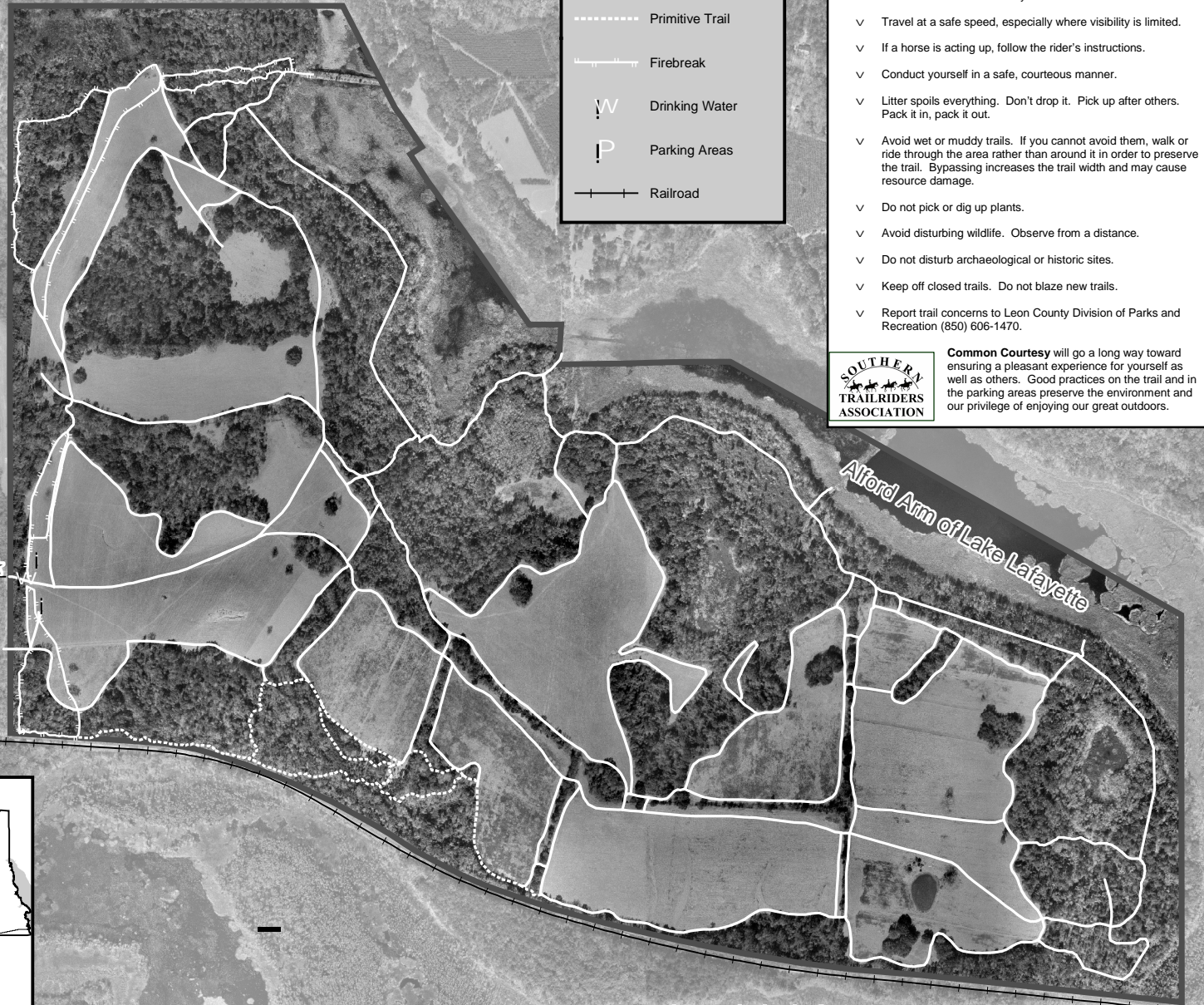
- Greenway Boundary
- Maintained Trail
- Primitive Trail
- Firebreak
- Drinking Water
- Parking Areas
- Railroad

## HOW TO SAFELY SHARE THE TRAIL

- ✓ A general rule is "Wheels yield to heels, yield to horses." Vehicles, bicycles, and pedestrians yield the trail to horses.
- ✓ Read trail signage to find out what trail users you may encounter.
- ✓ Slow down or stop. Work out who will pass whom.
- ✓ Pass with care. Pass slowly. Indicate which side.
- ✓ Travel at a safe speed, especially where visibility is limited.
- ✓ If a horse is acting up, follow the rider's instructions.
- ✓ Conduct yourself in a safe, courteous manner.
- ✓ Litter spoils everything. Don't drop it. Pick up after others. Pack it in, pack it out.
- ✓ Avoid wet or muddy trails. If you cannot avoid them, walk or ride through the area rather than around it in order to preserve the trail. Bypassing increases the trail width and may cause resource damage.
- ✓ Do not pick or dig up plants.
- ✓ Avoid disturbing wildlife. Observe from a distance.
- ✓ Do not disturb archaeological or historic sites.
- ✓ Keep off closed trails. Do not blaze new trails.
- ✓ Report trail concerns to Leon County Division of Parks and Recreation (850) 606-1470.



**Common Courtesy** will go a long way toward ensuring a pleasant experience for yourself as well as others. Good practices on the trail and in the parking areas preserve the environment and our privilege of enjoying our great outdoors.



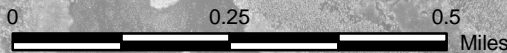
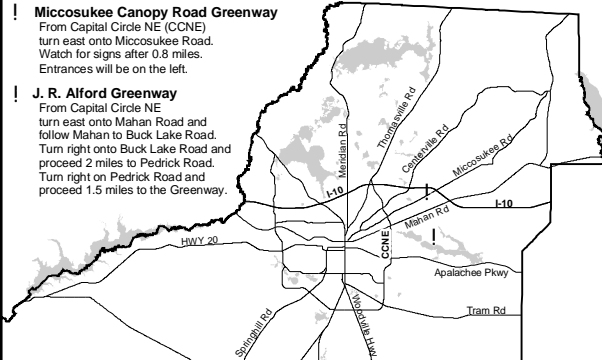
### Enjoy Leon County's Greenways!

#### ! Miccosukee Canopy Road Greenway

From Capital Circle NE (CCNE) turn east onto Miccosukee Road. Watch for signs after 0.8 miles. Entrances will be on the left.

#### ! J. R. Alford Greenway

From Capital Circle NE turn east onto Mahan Road and follow Mahan to Buck Lake Road. Turn right onto Buck Lake Road and proceed 2 miles to Pedrick Road. Turn right on Pedrick Road and proceed 1.5 miles to the Greenway.



Lower Lake Lafayette